

Installation Instructions

Independence Pass

Part # CMB006



591 South Boulevard Street
Gunnison, Colorado 81230
info@idsculpture.com
970-641-1747

Specifications: Independence Pass Combo

- Material: GFRC Concrete with Structural Foam
- Approximate Uninstalled Size (Transition): 6'-6" x 4'-6" x 7'-1" Tall
- Approximate Uninstalled Size (6 By): 7'-0" x 5'-6" x 7'-11" Tall
- Approximate Weight (Transition): 4,300 Lbs
- Approximate Weight (6 By): 5,600 Lbs
- Maximum Fall Height (Transition): 6'-1" (with 1' of Safety Surfacing)
- Maximum Fall Height (6 By): 6'-6" (with 1' of Safety Surfacing)
- Age Group: 5-12 Years Old

Required Parts (included):

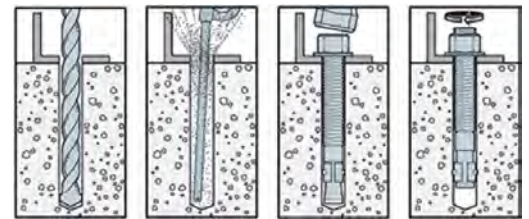
- Transition Boulder GFRC Sculpture
- 6 by Boulder GFRC Sculpture
- Parallel Ropes Sculpture Ropes
- 4"x4"x4"x3/8" Aluminum Angle Mounting Brackets: 8ct
- Bolt Hanger (Lifting Eye): 8ct
- 3/4" x 8-1/2" SS Wedge Anchor: 8ct
- Igloo Rope Connector w/Connection Pin: 4ct
- Security Hex Key
- "Independence Pass" Drawing Set

Recommended Equipment (not included):

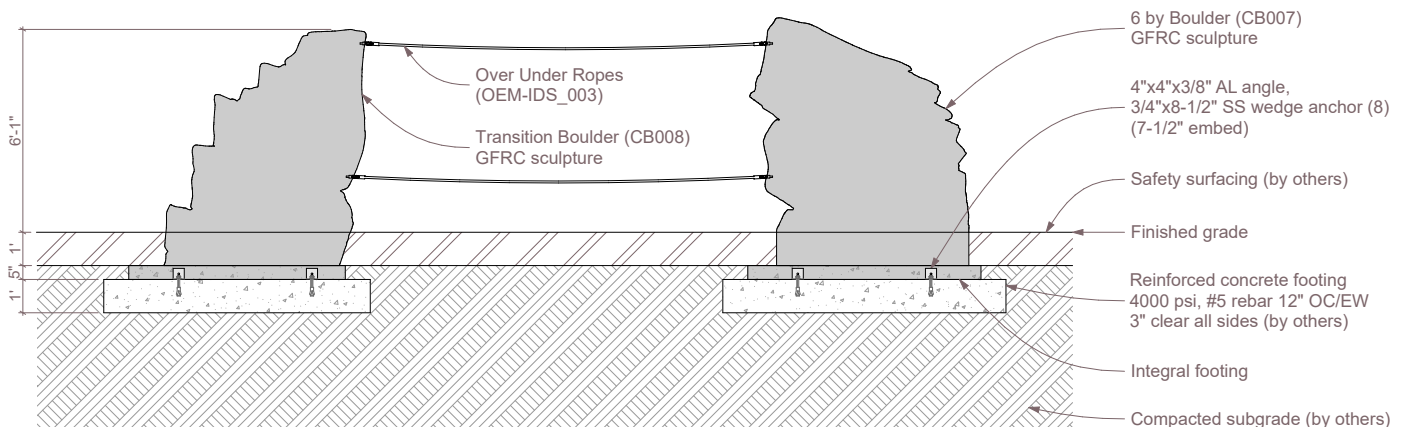
- Hammer Drill
- 3/4" x 10" Concrete Drill Bit
- Air Compressor
- Hammer
- 1-1/8" Wrench
- 10' Lifting Straps: 4ct
- 12' Lifting Straps: 4ct
- Large Adjustable Crescent Wrench
- 1/2" Quick Link: 4ct
- Lift: Reach Type Forklift 6,000lb Capacity or Crane

Important Notes:

- *Warning: Installation over a hard surface such as asphalt, or packed earth may result in serious injury or death from falls.*
- *It is the responsibility of the installer to ensure all components are installed in compliance with ASTM F-1487.*
- *All site built footings should be allowed to cure for a minimum of 48 hours prior to installation.*



Typical Wedge Anchor Installation



Section

Installation Instructions

Independence Pass

Part # CMB006

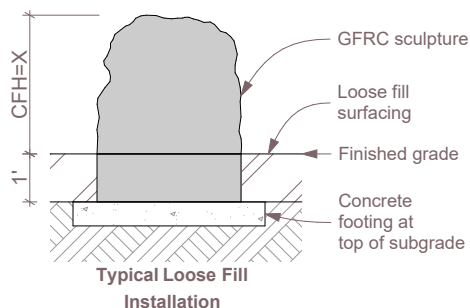


591 South Boulevard Street
Gunnison, Colorado 81230
info@idsculpture.com
970-641-1747

PRE-INSTALL CHECKLIST

Please review prior to ordering and installing ID Sculpture products.

- ☐ 1. Verify that you have the recommended lifting equipment to unload and install your component, as specified by the installation instructions. Please check the installation instructions for the weight of each component and shipping dimensions.
- ☐ 2. Develop a proper plan to access the site and control access prior to opening.
- ☐ 3. Call your local utilities to locate any potential existing below grade equipment?
- ☐ 4. FOR ALL SCULPTURES: Verify you have accounted for adjustments to the footing depth based on your choice of safety surfacing material. Footing depth must be adjusted to compensate for the depth/thickness requirements of the selected safety surfacing (*see diagrams below*). Layout drawings show the uninstalled dimensions of the component. If you require a modification to a standard component, please notify ID Sculpture when placing your order. *Additional charges may apply.*



*Critical Fall Height (CFH)

- ☐ 5. Verify that you have installed any required footings prior to the arrival of your sculptures. Please note, footings should be allowed to cure for a minimum of 7 days.

Important Safety Note:

Please install and maintain adequate protective surfacing under and around your equipment. Never let children play on the equipment before protective surfacing is installed. Please consult ASTM F1487 for more information.

Installation Instructions

Independence Pass

Part # CMB006



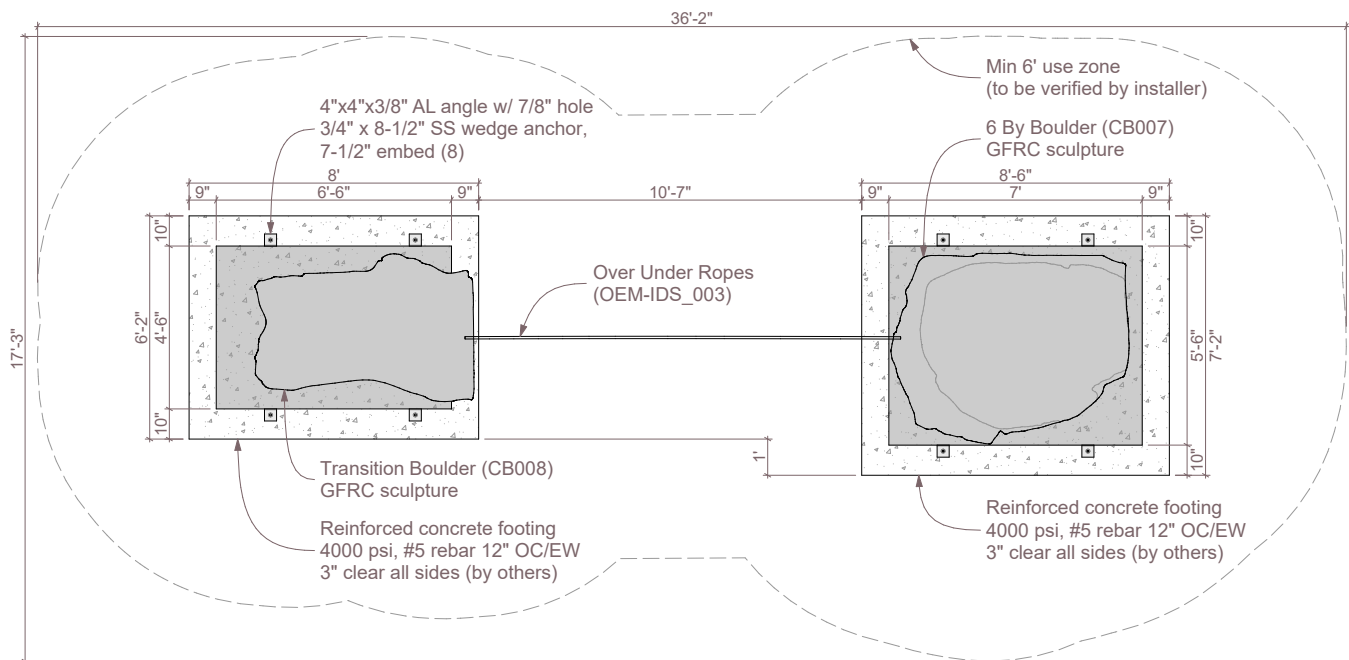
Sculpture Installation: Transition Boulder

591 South Boulevard Street
Gunnison, Colorado 81230
info@idsculpture.com
970-641-1747

1. Locate and construct the footer based on the provided layout plan drawing.
2. Place the pallet mounted Transition Boulder on footing, disconnect the boulder to pallet connection bolts and discard.
3. Make sure that the bolt hanger / lifting eyes are securely attached to the bolts protruding from the base of the sculpture. Secure the lifting straps to bolt hangers using ½" quick links.
4. Use the ratchet strap to secure the two lifting straps around taller portion of sculpture. (see reference image)
5. Lift the sculpture using an appropriate reach forklift or crane taking care to equalize the load on straps.
6. Remove the pallet and set the piece in place on the footing.
7. Do not remove the bolt hangers or drill anchor holes until sculpture rope is installed and tensioned.

Sculpture Installation: 6 By Boulder

8. Locate and construct the footer based on the provided layout plan drawing.
9. Place the pallet mounted 6 By Boulder on footing, disconnect the boulder to pallet connection bolts and discard.
10. Make sure that the bolt hanger / lifting eyes are securely attached to the bolts protruding from the base of the sculpture. Secure the lifting straps to bolt hangers using ½" quick links.
11. Lift the sculpture using an appropriate reach forklift or crane taking care to equalize the load on straps.
12. Remove the pallet and set the piece in place on the footing.
13. Do not remove the bolt hangers or drill anchor holes until sculpture rope is installed and tensioned.



Plan

Installation Instructions

Independence Pass

Part # CMB006



591 South Boulevard Street
Gunnison, Colorado 81230
info@idsculpture.com
970-641-1747

Sculpture Ropes Installation:

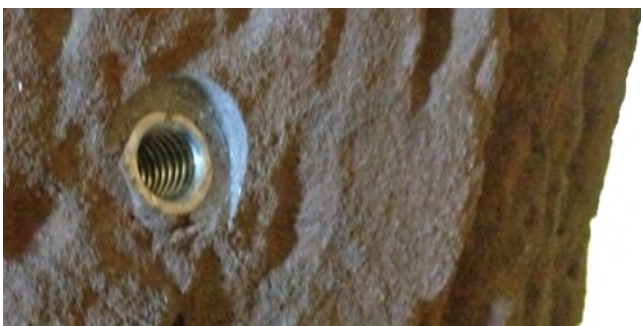
14. Connect sculpture ropes to GRFC sculptures with provided Igloo rope connectors & connection pins (4).
 15. Adjust rope tension between the two sculptures by carefully sliding one or both sculptures with crane or reach forklift.
 16. When proper tension is achieved verify all use zones as defined by ASTM 1487.
- *** Never install any rope component taut, some slack should always be present. ***

Sculpture Installation Continued:

17. Only after all sculpture ropes have been connected and adjusted and use zones as defined by ASTM 1487 have been verified, should the sculptures be anchored to the ground.
18. Remove the bolt hangers, replace the 5/8" nut over mounting brackets.
19. Drill through the holes in the mounting brackets with a 3/4" x 10" hammer drill bit to a minimum depth of 7-1/2", clean holes with compressed air and brush.
20. Install the 3/4" x 8-1/2" stainless steel wedge anchors (8) and tighten.
21. Install resilient surfacing material in accordance with layout guidelines, and ASTM standards.



Typical Parallel Ropes Tension



Female Threaded Connection



Installed Igloo Connector

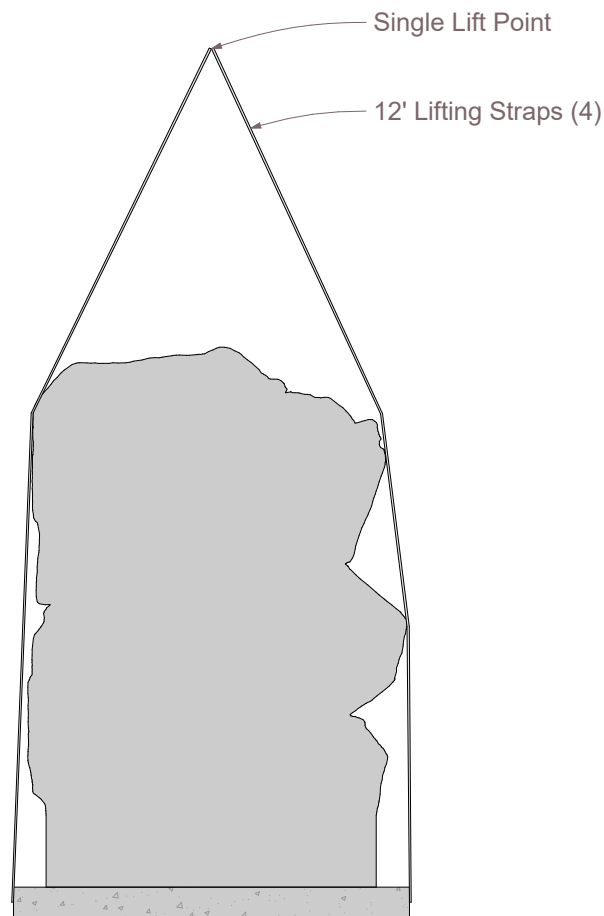
Installation Instructions

Independence Pass

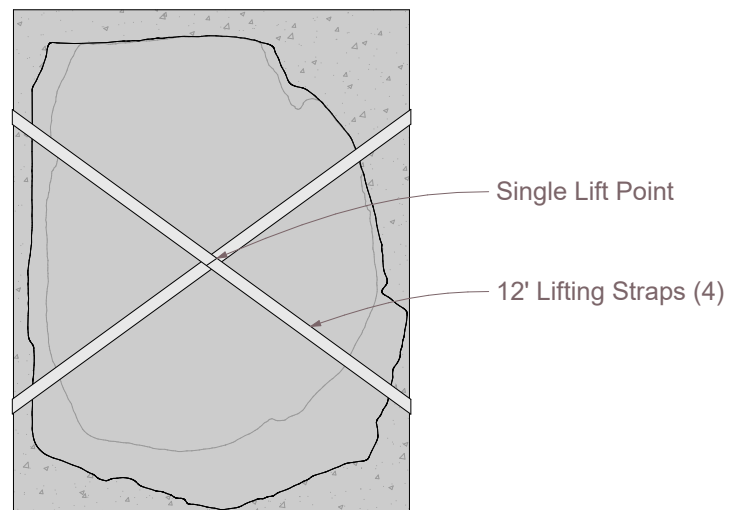
Part # CMB006



591 South Boulevard Street
Gunnison, Colorado 81230
info@idsculpture.com
970-641-1747



6 by Boulder - Pick Diagram - Elevation



6 by Boulder - Pick Diagram - Plan

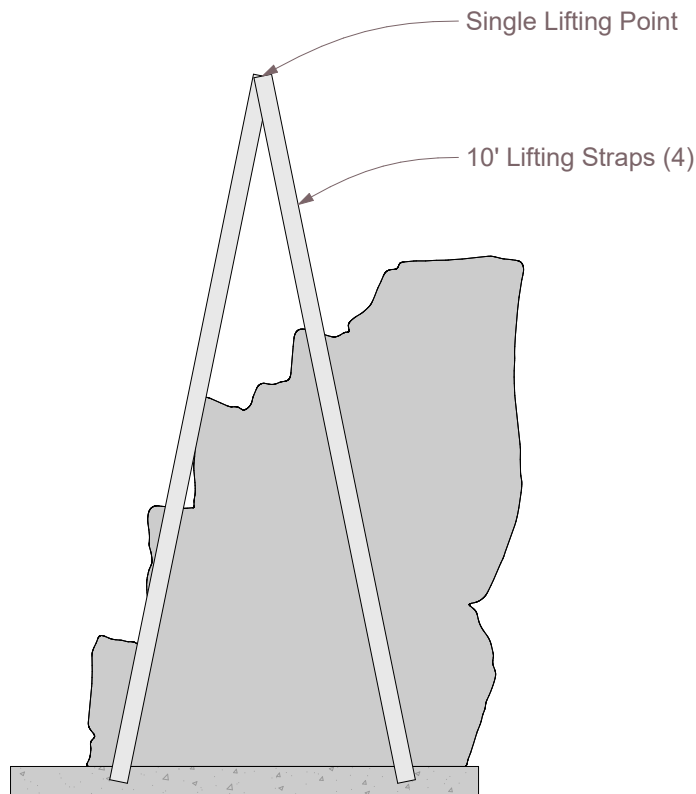
Installation Instructions

Independence Pass

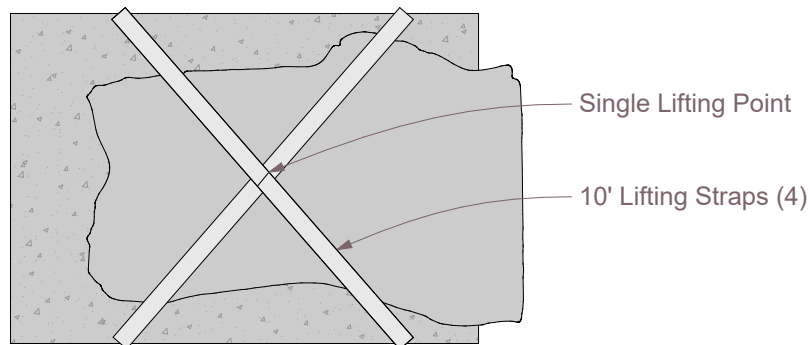
Part # CMB006



591 South Boulevard Street
Gunnison, Colorado 81230
info@idsculpture.com
970-641-1747



Transition Boulder - Pick Diagram - Elevation



Transition Boulder - Pick Diagram - Plan